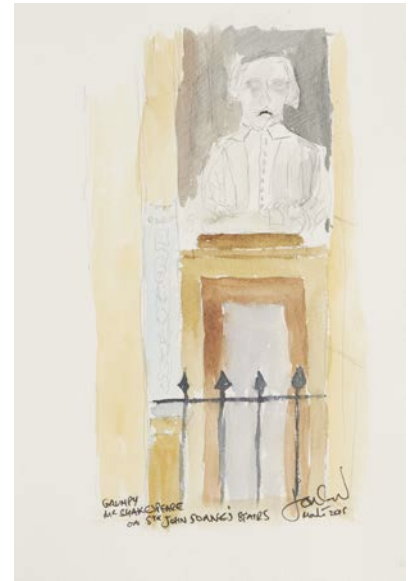
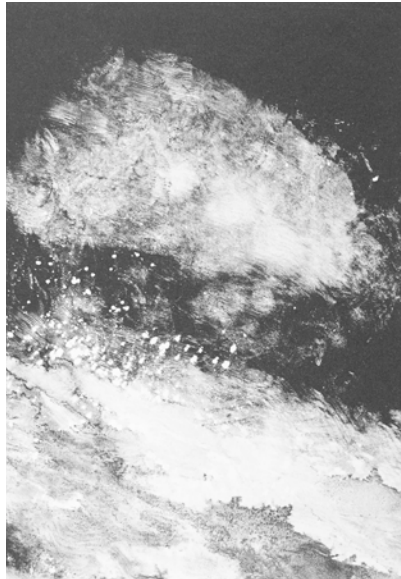


PRESS RELEASE, April 2015

Inspired by Soane: I found this and thought of you...

Manolo Blahnik, Christopher Bailey, Maggi Hambling, Paul Smith and Jon Snow among leading figures to donate original artworks for new exhibition at Sir John Soane's Museum

19 May – 6 June 2015



Works by Christopher Bailey, Maggi Hambling, Jon Snow (left to right)

Some of the world's best and most celebrated artists, architects, creatives and fashion designers will feature in a brand new exhibition entitled *Inspired by Soane: I found this and thought of you...* at Sir John Soane's Museum (19 May to 6 June 2015). Fashion designers Manolo Blahnik, Christopher Bailey, and Paul Smith, artists Maggi Hambling and Antony Gormley, architect Zaha Hadid, and presenter Jon Snow are among the 100 personalities that have contributed to *Inspired by Soane* by donating original postcard artworks. This collection will go on display at the Museum, and each piece will be available to win in a raffle that will help raise funds for the Museum.

These acclaimed individuals were asked to create imaginative and inventive postcard artworks, inspired by a selection of 100 objects from the Museum's collection that are not on regular public display. Over 140 unique, beautiful and highly creative pieces have been donated, in a variety of artistic mediums from paintings, photographs and collages, to sculpture, metalwork and ceramics.

As part of the exhibition, visitors will be offered the chance to take part in a raffle to win one of these original artworks. The money raised will go towards digitising 18,000 items in the Museum's drawings collection, ensuring that they are available online to be accessed by audiences around the world. As part of the fundraising effort, the Museum has been

successful in securing match funding for monies raised, thanks to the generosity of the Leon Levy Foundation. For every £1 raised, the Museum will receive a further £1 from the Foundation, up to the first £50,000. This will be invaluable to ensuring continued access to the Museum's collection.

One of the most notable artworks in the exhibition is by famed American architect Michael Graves, who passed away this year. This postcard was the last painting he created in his lifetime, and will be auctioned separately to the raffle, by the US-based Sir John Soane's Museum Foundation - of which he was a member of the advisory board.



Michael Graves's postcard

Other highlights include pieces by esteemed architects Sir Peter Cook and Will Alsop OBE - winner of the RIBA Stirling Prize - leading artists Elmgreen and Dragset, political cartoonist Rupert Redway, and Canadian designer and sculptor Omer Arbel.

The exhibition *Inspired by Soane: I found this and thought of you...* will run from 19 May to 6 June 2015. For a chance to win one of the postcards in the exhibition, a minimum donation of £350 - which will be matched by the Leon Levy Foundation - will enter you into the draw for one of the pieces. Tickets will be drawn at random to determine the winners of each postcard, shortly after the exhibition closes. For more information on how to get involved visit www.soane.org/exhibitions/inspired-by-soane

- Ends -

Listings

Exhibition: *Inspired by Soane: I found this and thought of you...*
Dates: 19 May – 6 June 2015
Address: Sir John Soane's Museum: 13 Lincoln's Inn Fields, London WC2A 3BP
Opening hours: Tuesday to Saturday 10am-5pm. Last entry 4:30pm
Admission: Free

PRESS OFFICE Contact details

Press Office at Caro Communications; 020 7713 9388; @carocomms

Marta Bogna, Account Director: marta@carocommunications.com

Jordan Lewis, Account Manager: jordan@carocommunications.com

Rachael Jones, Account Executive: rachael@carocommunications.com

NOTES TO EDITORS

Sir John Soane's Museum

Sir John Soane's house, museum and library at No. 13 Lincoln's Inn Fields has been a public museum since the early 19th century. On his appointment as Professor of Architecture at the Royal Academy in 1806 Soane (1753-1837) began to arrange his books, classical antiquities, casts and models so that students of architecture might benefit from access to them. In 1833 he negotiated an Act of Parliament to preserve the house and collection after his death for the benefit of 'amateurs and students' in architecture, painting and sculpture. Today Sir John Soane's Museum is one of the country's most unusual and significant museums with a continuing and developing commitment to education and creative inspiration. The museum is open free: Tuesday to Saturday inclusive, 10am-5pm. It is also open on the first Tuesday evening of each month from 6-9pm. www.soane.org

Sir John Soane's Museum is a Non-Departmental Public Body (NDPB) whose prime sponsor is the Department for Culture, Media and Sport.