

Follow us on [Twitter](#), [Facebook](#) or [Pinterest](#)

ART ACROSS THE CITY

A LOCWS International Public Art Programme Across the City of Swansea, Wales, UK

[HOME](#) [WHAT'S ON](#) [ARTISTS](#) [OUTREACH](#) [BLOG](#) [ABOUT](#) [CONTACT](#)

[English](#) | [Cymraeg](#)

Blog



Interview with Sinta Tantra

[Like](#) 9 [Tweet](#) 8

By [gordon](#) on 11 February 2013 in [High Street](#), [Installation](#), [News](#), [Sculpture](#) with [No Comments](#)

[Sinta Tantra](#)'s Greater Reality of Elsewhere is part of Art Across The City 2013. It is situated above 229 High Street, Swansea, the current home of [Volcano Theatre Company](#).



How did the commission come about?

ST: Just before my exhibition at [Open Eye Gallery](#) as part of the [Liverpool Biennial](#) this year, I was approached by Gordon Dalton (Project Manager for Locws International) who was interested in commissioning my work for the 2013 programme for Art Across the City. It was peculiar synchronicity because only a few days before, I had read about them in AN Newsletter. I am a big fan of their commissioned artists including [David Blandy](#), [Bedwyr Williams](#) and collaborative duo [Joanne Tatham & Tom O' Sullivan](#). At a time of global recession and drastic budget cuts (especially in the arts), it's wonderful how Swansea are really taking the plunge – investing in the town's regeneration and future legacy.

How did you approach the local context and site?

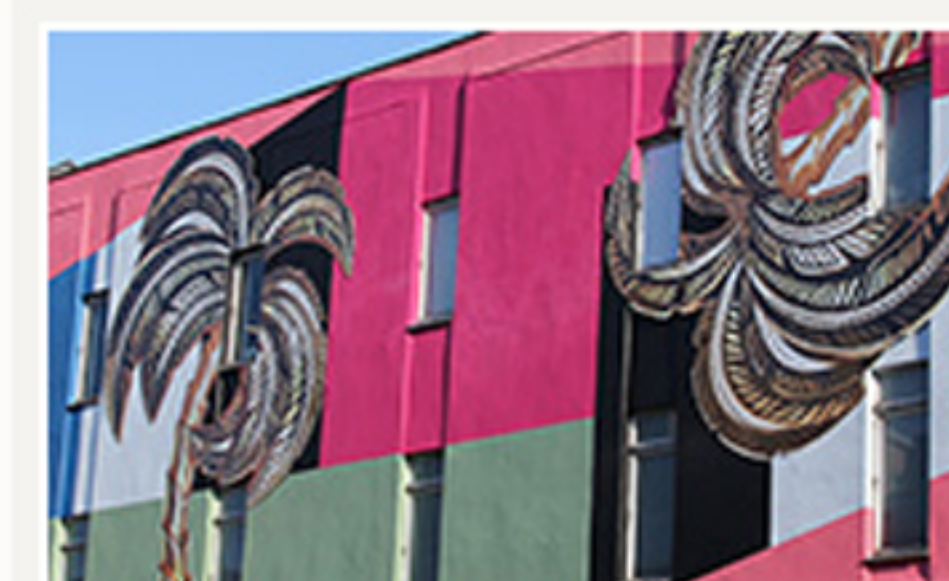
As with many public art commissions, there's a timeframe in which to actively engage in research. Previously, the only facts I knew about Swansea were Dylan Thomas and beaches. When visiting Swansea I was struck by the cultural diversity as seen on St. Helen's Road. Walking past you'll see Welsh next to Ethiopian, next to Chinese, next to an Indian, next to Italian – and coming from Bali, I was particularly drawn to the unexpected presence of an little Indonesian restaurant called '[Garuda](#)'. Although I am very used to towns and cities dividing themselves into cultural neighbourhoods such as 'China Town' or 'Little India', I have never seen such a crazy cultural mish-mash on such a small stretch of road. I wanted to create a piece of work that reflected this experience and challenged the stereotypes of Swansea – injecting a sense of 'exotica' into the fabric of the town itself.

To search type and hit enter

Recent Posts

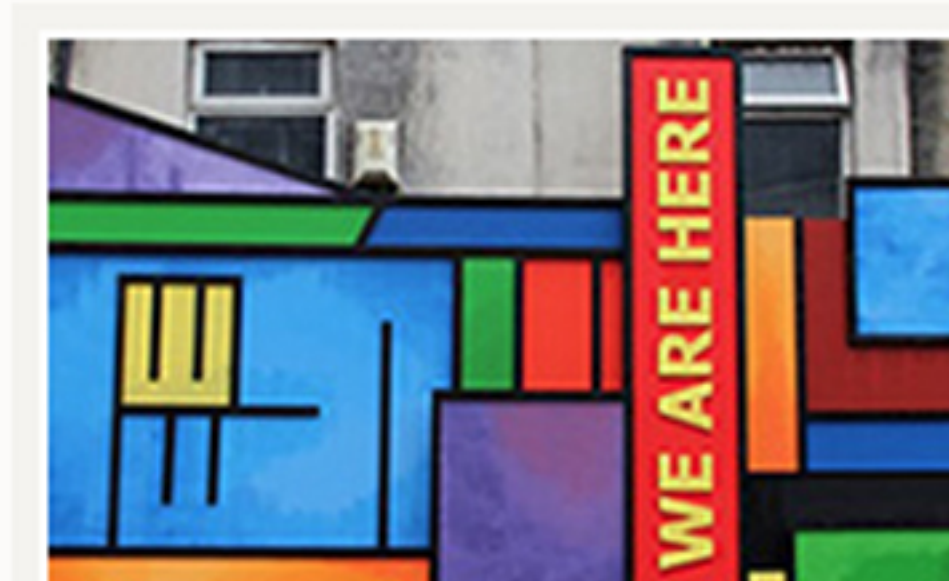
- [Pete Fowler gives Dylan Thomas a cosmic makeover](#)
- [Olaf Breuning joins Art Across The City 2013](#)
- [Interview with Sinta Tantra](#)
- [Gold palm trees take over the High Street](#)
- [Swansea Icons: Cwmbwrla Primary School](#)

What's On



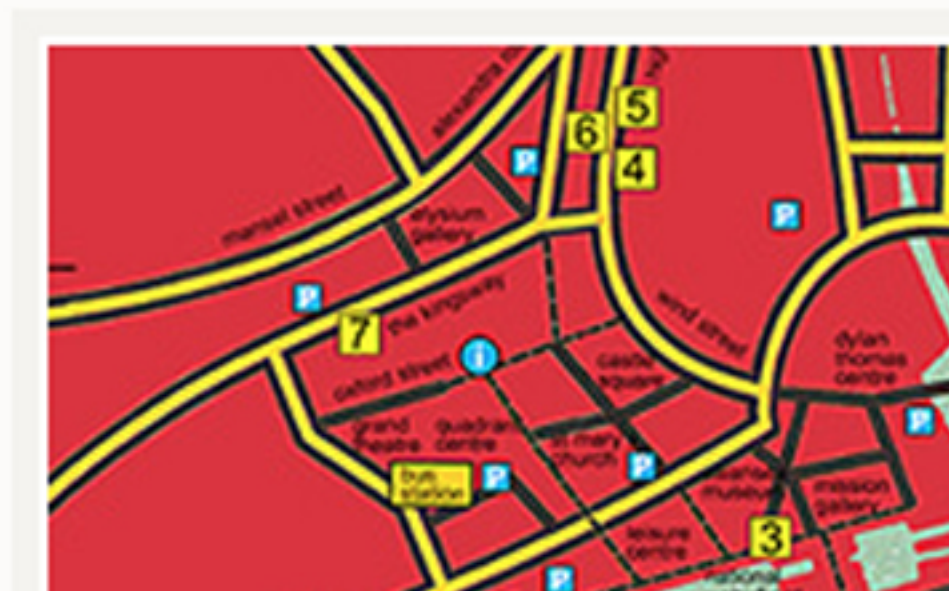
Artwork On Show Today

Several artworks are permanent and can be seen across the city today



Art Across The High Street

See the current artworks within the [Art Across The High Street](#) programme



Artwork Location Map

Navigate your way around the city and see the [Art Across The City](#) artworks



Limited Edition Prints

Buy Limited Edition Prints by the [Art Across The City 2012](#) artists [here](#)