

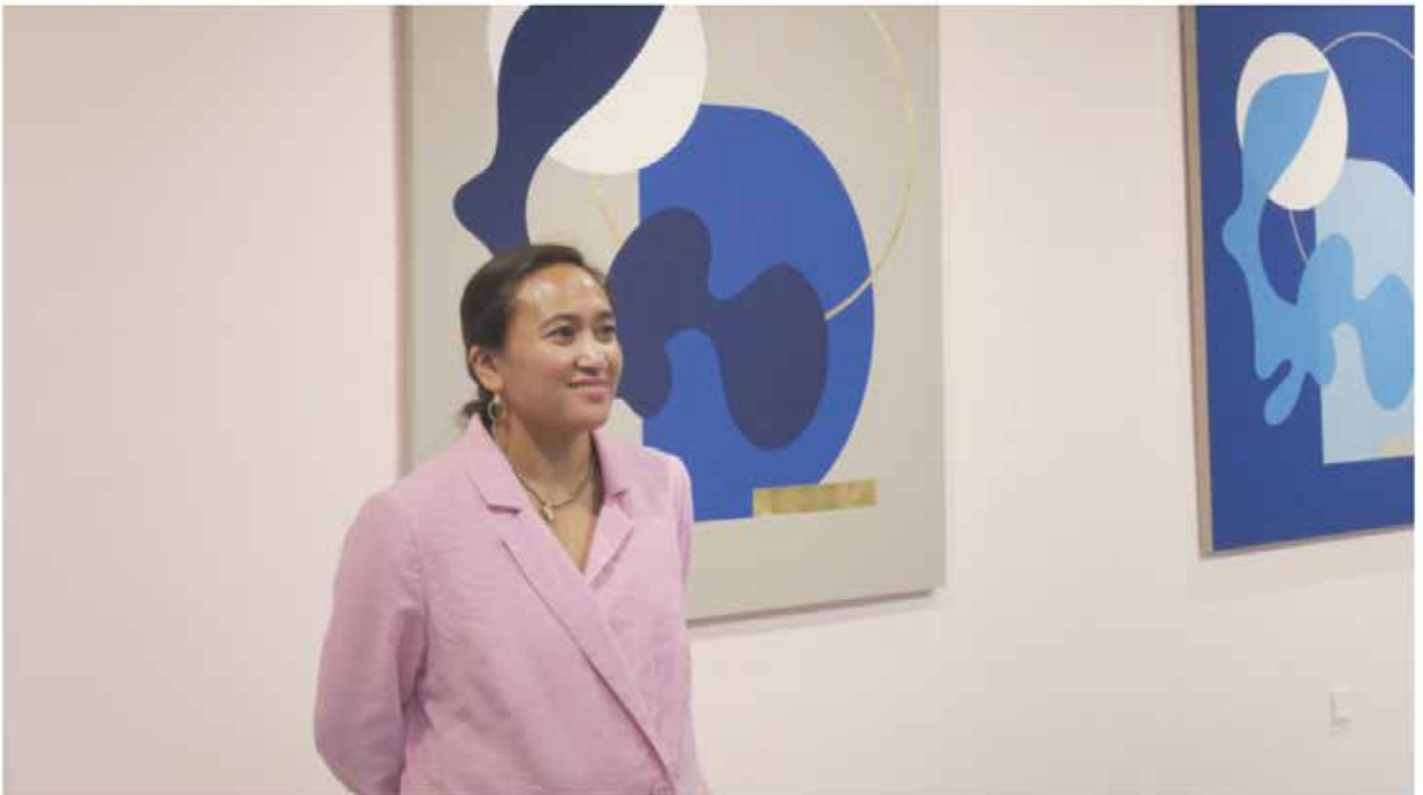


HOME FASHION BEAUTY & HEALTH ART & CULTURE DESIGN & TECH FOOD & TRAVEL PEOPLE WEDDING GOD DFK

Constellations of Being Exhibition, Identity in Aesthetics of Sinta Tantra

This solo exhibition of Sinta Tantra presents a very personal metaphor about self and family, with colonial history behind it

8 Aug 2022



Sinta Tantra 's love for color and composition, as well as her exploration of identity and aesthetics, is evident in her works in her solo exhibition, "*Constellation of Being* ." Sinta is a Balinese artist based in the UK and Indonesia, known for her specialty in painting geometric shapes in bright tropical colours.

This exhibition presents Sinta's latest works curated by **Sadiah Boonstra**. The majority of his works consist of paintings, with several installations that support the personal narrative that is the thread of this exhibition.

Figurative forms



Clockwise: "Taman Ujung (*A Water Palace*)," "Indah Ripon (*Black Magic*)," and "Harsiam (*Broken Eggs*)."

Sadiah Boonstra explained that Sinta's works in this exhibition are figurative forms presented by the artist, to retell stories of her family's past. This is also Sinta's attempt to revisit her cultural roots in Indonesia, and translate it through her works.

This time, Sinta's solo exhibition focuses on life stories, history, and the relationship between families related to values and beliefs. These links are what she calls "the constellation."

A piece of the story about her mother's experience of breaking eggs when she was a child, for example, was put into a painting entitled "Harsiam (*Broken Eggs*)."

There is also the figure of the grandmother from her father's side, the village flower who is so beautiful, but reportedly affected by teluh or black magic (*black magic*). The figure of the grandmother who so impressed Sinta was presented in a painting entitled "Beautiful Ripon (*Black Magic*)."

Examining the roots of self-identity



Clockwise: "Constellation of Being (1), (2), and (3)"

Sintia asked her parents about the history and memorable memories in the family, to get inspiration for his works. Visitors can also listen to these personal stories, through the videos shown in this exhibition. The stories of her father and mother will also make you deeper into Sintia's interest in exploring the roots of her identity.

"I want to connect with people on a level that has transcended words and culture. I have a repertoire of shapes and colors I can plug and disassemble and a set of rules I can follow or break if needed," explains Sintia.

Sintia paints using tempera paint on photo linen and uses organic and mineral materials – which she describes as a process of "living and breathing." Lately, Sintia has also looked at the use of gold material, by attaching gold leaf sheet after sheet in her paintings.

After more than two years of in-depth research during the pandemic, the inspiration for this solo exhibition was drawn from silhouettes of tropical leaves against a backdrop of abstract geometric shapes and linen. Here, we can see how Sintia translates the influences gained from European painters such as Henri Matisse and Jean Arp and then fuses them with symbolic forms typical of Balinese artist, Nyoman Lempad.



Clockwise: Deborah Iskandar (founder and president director of ISA Art Gallery), Sinta Tantra, Sadiyah Boonstra

Sinta Tantra's previous works that are famous in the form of murals in public spaces in Hong Kong to Liverpool, including the most attention-grabbing one is the mural that adorns the 300-meter bridge at Canary Wharf, London as part of the 2012 Olympic project. Recently, she also completed a mural project that adorns the facade of *Poins Square Mall* and Apartments in South Jakarta.

"*Constellation of Being*" is present at ISA Art Gallery, ground floor of Wisma 46 - BNI City. This exhibition is open to the public August 6 - September 30, 2022.

MARDYANA ULVA

Photo: ISA Art, doc. GODDESS

Topic

Art